

BETHANY ELC NEWSLETTER

17TH OF MARCH 2020

TERM 1 WEEK 7



Welcome to our Term 1, Week 7 Newsletter.

It is evident that we are facing some uncertain times with the spread of COVID-19 in our nation. We have been having conversations with our children about the virus, equipping them with information that empowers them to make choices that protect themselves and others around them - this includes hygiene practices such as hand-washing and coughing/sneezing etiquette. We are encouraging our children to be kind, compassionate and empathetic to others, particularly in times where fear and panic may surround us.

As a school leadership, we have taken a few considered measures to reduce the risk of bringing large groups of people together. This includes **cancelling our Autumn Fair** (which was meant to take place on 21/3) and cancelling any whole school gatherings. We have also **postponed our Woolworths Excursion** to a later date on advice from the Woolworths team.

If you have returned from overseas after the 15th of March OR if you have had contact with somebody with COVID-19, you will be required to self-isolate for two weeks. We are also encouraging families to keep children home if they are showing signs of being unwell.

We will continue to monitor events and follow advice to reduce the risk of infection through good hygiene practices. We will also keep communication clear and keep you updated of any significant changes or developments, based on the latest Government advice. We are praying that God keeps your families safe and filled with his peace during this time.

Blessings,
Rachael Chesson
ELC Coordinator

OUR LEARNING



This fortnight we will meet our Kimochi friends Cloud and Huggtopus. Cloud teaches us about happy, sad, and mad, and Huggtopus teaches us about silly, frustrated and excited feelings.

**What is the 'not now' signal?
What should you do if someone shows you the signal?**

We are learning about the letters 'n' and 'c'! The names of the letters are 'en' and 'see' and the sounds they make are /n/ as in nuts and /c/ as in cup.

What are some other words that start with 'n' and 'c'?



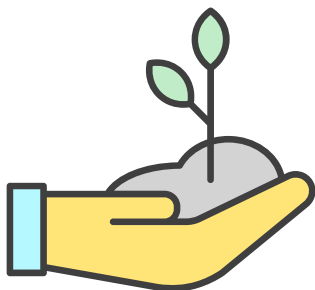
We are learning about collecting new information!

What are some of the questions you can ask at home to find out something new about your mum or dad?

OUR LEARNING

This fortnight we are looking into our garden to see what we can find!

Do you have your own garden at home? What are some of the plants and bugs you can find in your garden?



We are going to learn more about caring for our environment. This fortnight we will learn more about helping plants grow!

What is something we can do together to take care of our ELC garden?

This fortnight we are learning more about hygiene practices. Did you know that we are encouraged to wash our hands for at least 20 seconds?

Why do we need to wash our hands?

How do we wash our hands thoroughly?

Why do we need to cough/sneeze into our elbows?



OTHER INFORMATION

Communication

Each child has their own pocket in the foyer where you will find notices or relevant forms.

Please remember to check this each day your child is in ELC. Please be reminded to check Storypark for regular updates of our daily activities.

We understand you may need to contact the ELC during other times which you are welcome to do via email elc@bethany.sa.edu.au, or phone 8283 0000.



10. Climb a steep slope on your hands and knees
11. Watch a sunrise or sunset
12. Play with mud



Important Dates in Term 1:

Autumn Fair

Woolworths Excursion

Rainbow Fruit & Veg Week

Easter

Cancelled

Postponed

Week 10 (6/4-9/4)

Week 10 (10/4-13/4)

