

# BETHANY ELC NEWSLETTER



8TH OF AUGUST 2023  
TERM 3 WEEK 2



Welcome to our Term 3, Week 3 Newsletter.

My, how the year is flying! With exciting projects already underway and new friendships forming we're off to a wonderful start for term 3.

Last week, the children had a blast celebrating NAIDOC sharing week with Reception and Year 4 students, and this week will be equally entertaining. The children will have the privilege of joining the 'big' school to watch The NED Show. NED stands for; Never give up, Encourage Others and Do your Best and offers a performance with entertaining yo-yo tricks that teaches resilience, persistence and regulation strategies. We can't wait!

Some exciting additions to our centre are the arrival of three stick insects including their new improved enclosure. Thanks to the innovative Mrs Haywood, we have a bookshelf turned planter bed. The children have been learning about their responsibility for God's creation by being involved in planting, and caring for creatures great and small.

This week we are also thrilled to see our dramatic play corner transformed into a dental clinic to acknowledge Oral Health Week and to foster the children's relationships through role play. We anticipate the interesting conversations around dental health that might evolve.

As we continue to explore our 'We Challenge' component of our philosophy this term, I encourage you to think about how you are supporting your children at home. As a parent myself, I know how tempting it is to 'rescue' children by doing things for them. Perhaps instead, we could look at allowing children to zip up their own jacket and carry their own bags to empower them this term!

**Yours in Christ,**  
**Fiona Thuraisingham - ELC Educator**

# OUR LEARNING



We are learning about the fruits of the Spirit this term. This week we are learning about PEACE!

**Can you share the story about Jesus calming the storm with someone in your family?**

We are transforming our dramatic play corner into a Dental Clinic this week!  
**Who will you be exploring our ELC Dental Clinic with?**



We are "eating the rainbow" this term and trying all different types of fruit & vegetables in a rainbow of colours!

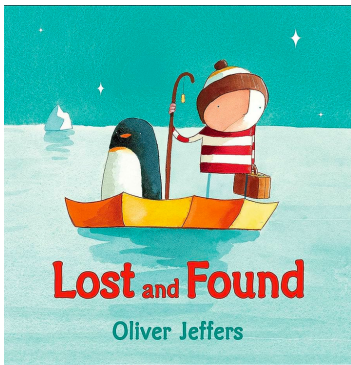
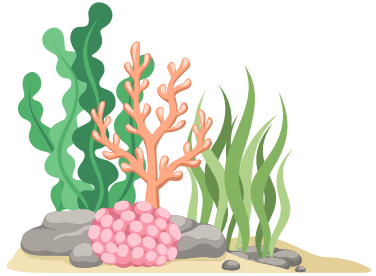
**Did you learn about a new fruit or vegetable this week?**



# OUR LEARNING

With our Underwater Adventure tube, we will be exploring sensory play!

**What was something in our Underwater Adventure tube that you liked playing with?**



On our story table this week, we will explore the story of Lost and Found by Oliver Jeffers!

**What do you remember from Lost and Found that you can share with someone in your family?**

The letters we are learning about this week & next week are 'U' and 'H'.

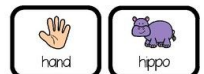
**Can you ask someone in your family to help you think of words starting with 'u' or 'h'?**



hamburger



helmet



hand



hippo



hammer



heart

# OTHER INFORMATION

## Communication:

Each child has their own pocket in the foyer where you will find notices.

Please remember to check this each day your child is in ELC, please also check Storypark for regular updates of our daily activities, and your emails for ongoing communication.

We understand you may need to contact the ELC other times throughout the day which you are welcome to do via email: [elc@bethany.sa.edu.au](mailto:elc@bethany.sa.edu.au), or phone: 8283 0000.



- 34. Play with a ball at an oval or on the beach
- 35. Paddle at the beach or backyard wading pool
- 36. Play shops under a tree with seedpods and leaves



## Important Dates in Term 3:

|                           |                           |
|---------------------------|---------------------------|
| NED Show                  | Week 3 Fri (11/8)         |
| National Science Week     | Week 4 (14/8-18/8)        |
| Book Week                 | Week 5 (21/8-25/8)        |
| All Families Pyjama Night | Week 5 Tue (22/8)         |
| Father's Day Stalls       | Week 6 Thu-Fri (31/8-1/9) |
| Father's Day Come & Play  | Week 7 Mon-Thu (4/9-7/9)  |
| Pupil Free Day (Show Day) | Week 7 Fri (8/9)          |

