

BETHANY ELC NEWSLETTER



16TH OF MAY 2023
TERM 2 WEEK 3



Welcome to our Term 2, Week 3 Newsletter.

What an amazing and busy week we had to celebrate Mother's Day.

The week started with Come and Play, where our mothers could come and spend an exciting time with their child. Every child and their mum, aunty or grandma had the opportunity to enjoy dancing, playing and even they had the pleasure to try a special scrub made by the ELC children.

Later on in the week, our children had the chance to buy their mum a present to surprise them. At the ELC, all the children made a Mother's Day card that have funny quotes from our children.

Alongside the preparations, the children kept on exploring and learning so many things like visiting our library. Mrs Carlesso read a story and explained how we need to behave in the library. In our project time, the children washed baby dolls in tubs and cared for them. What fun it was! Then we learned how to rub real leaves on paper and we explored sustainability in order to build an inside tree to decorate our environment.

We hope you had a wonderful week and we wish all our mums a Happy Mother's Day!

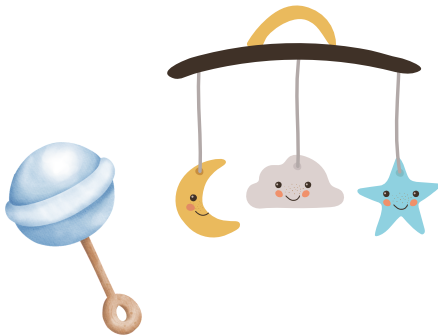
**God bless,
Ariela Beilin - ELC Co-Educator**

OUR LEARNING



We are creating family portraits together this week!
Who are you excited to draw in your family portrait?

We are learning to measure together!
Can you show someone in your family which stick is the longest and which is the shortest?



We are going to be adding baby toys to our ELC nursery this week!
What baby toy will you use to play with our ELC baby dolls?

OUR LEARNING

We are going to make a paper mache volcano!
Can you tell someone in your family what you learnt about volcanos this week?



We are meeting Lovey Dove this week who will teach us the "kind" feeling!
How will you use helpful words this week to be kind to someone?

Using our Story Table, we will explore the story "Ernie Dances to the Didgeridoo"! **Can you remember what happens in the story? Can you tell it to someone in your family?**



Ernie waves goodbye to Rosie, Frank, Tessa, Nicky, Clive and Celeste, and promises to write them a letter for each of the six Arnhem Land seasons.

He flies above the desert for hours

OTHER INFORMATION

Communication:

Each child has their own pocket in the foyer where you will find notices.

Please remember to check this each day your child is in ELC, please also check Storypark for regular updates of our daily activities, and your emails for ongoing communication.

We understand you may need to contact the ELC other times throughout the day which you are welcome to do via email: elc@bethany.sa.edu.au, or phone: 8283 0000.



19. Draw with a stick in the dirt
20. Grow some herbs and veggies in a patch or pot
21. Visit a farm or a petting zoo



Important Dates in Term 2:

Parent Teacher Conversations	Week 3 Mon/Wed/Thu, Week 4 Tue/Thu
National Reconciliation Week	Week 5 (29/5-2/6)
Pupil Free Day (ELC Closed)	Week 6 Fri (9/6)
King's Birthday (ELC Closed)	Week 7 Mon (12/6)
Family Come & Play	Week 7 Tue (6/6)
NAIDOC Week	Week 10 (2/7-9/7)
Term 2 Holidays (ELC Open)	Mon (10/7) - Fri (21/7)
ELC Closed (Holidays)	Holiday Week 1 Fri (14/7)

